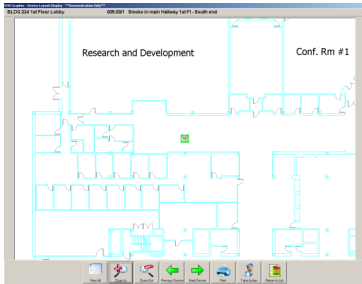


EMS GRAPHIX

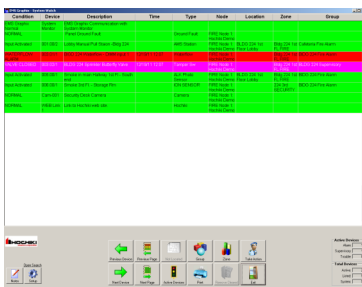


DESCRIPTION

EMS Graphix is a PC software tool used to monitor real-time events from a standalone, multiple standalone or multiple networked fire alarm control panels. This software tool offers a means to monitor events (Alarm, Supervisory, Trouble, etc.), provide action instructions, locate devices and provide a building floor plan.



GRAPHICAL USER INTERFACE MAP VIEW



GRAPHICAL USER INTERFACE EVENT LIST

STANDARD FEATURES

- UL 864 Listed
- Compatible with FireNET® 2127/4127, FireNET Plus®, and FireNET® Network Annunciator
- Real-time display of text, graphic, and event list (Fire, Supervisory, Trouble)
- Color coded event list
- Unlimited amount of history storage
- Ability to send panel control commands (Panel Sounder Silence, Alarm Silence, Reset)
- Easy to program and simple graphical user interface (GUI)
- Secure system
- Ability to import Autocad drawings
- Event history can be viewed, filtered and exported to text or HTML document

SYSTEM REQUIREMENTS

- CD ROM drive
- Pentium 4 Processor or newer
- Windows XP Pro, Vista Business, Windows 7 Pro, Windows 8/8.1
- 100MB RAM memory (recommended 1GB)
- 1GB hard drive (20GB recommended if many maps are to be used)
- 32MB or better graphics card
- Any sound card
- Monitor must support 1024 x 768 graphics driver
- Mouse or other pointer device
- RS232 or RS485 connections (one for each control panel or network interface port)
- Moxa NPORT 5110 (serial to IP/TCP converter)
- Compatible with Comark 06-UL864-026 all-in-one
- PC for UL 864 Listed solution

PRODUCT LISTINGS



California State
Fire Marshal
7300-0410:0211

Specifications subject to change without notice.

Continued on back.

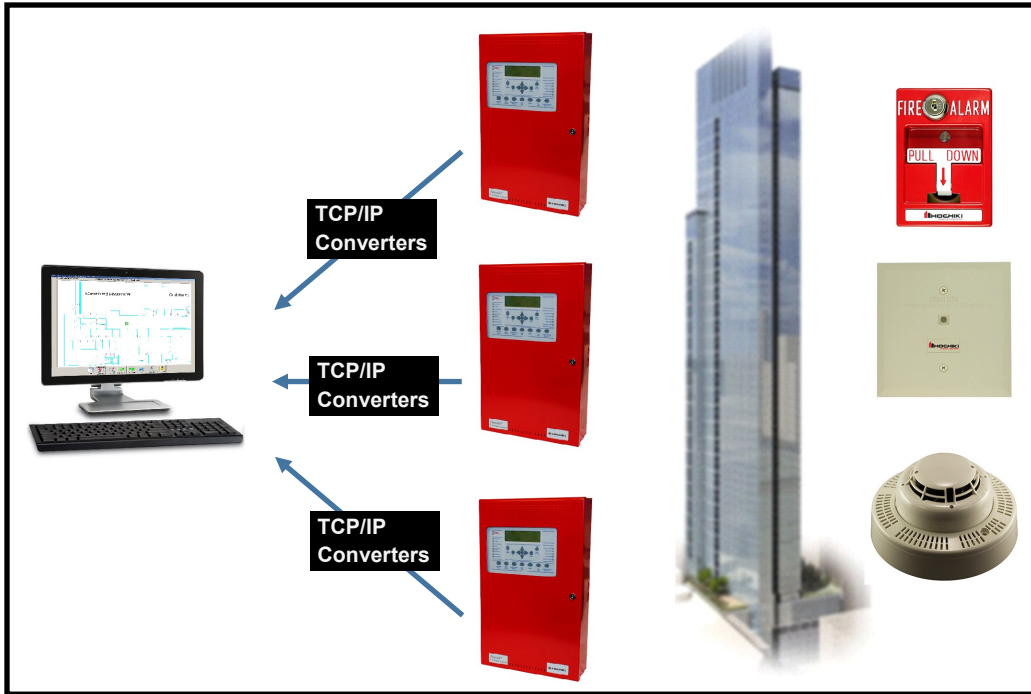
Hochiki America Corporation
7051 Village Drive, Suite 100, Buena Park, CA 90621-2268
Phone: 714/522-2246 Fax: 714/522-2268
Technical Support: 800-845-6692 or technicalsupport@hochiki.com



Find latest revision at www.hochiki.com

EMS GRAPHIX

SYSTEM EXAMPLES



Multiple Standalone Panels



Multiple Networked Panels